

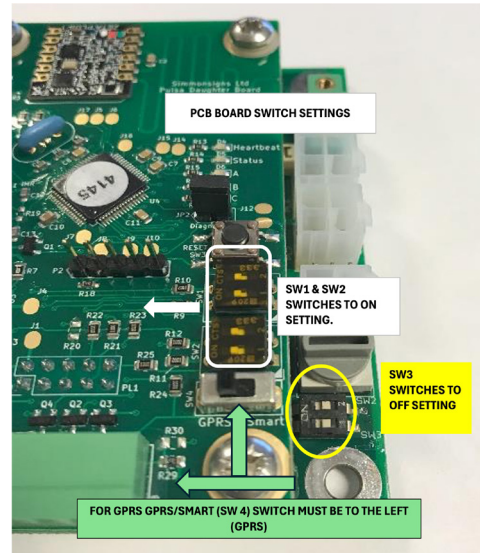
DESCRIPTION

This procedure is performed after the GPRS Pulsa has been installed on the post and the power supply has been wired ready for connection.



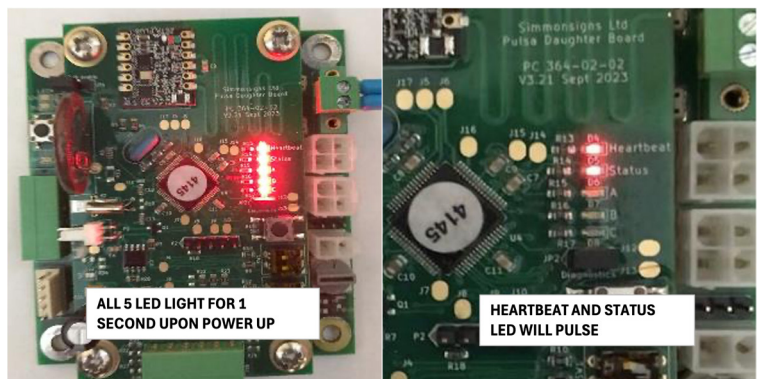
CHECK SWITCHES

Check switches on lower and upper PCB are in correct positions as shown, all other switches on upper PCB should be in the on position. (Positioned furthest from the edge of the PCB).



CONNECT POWER

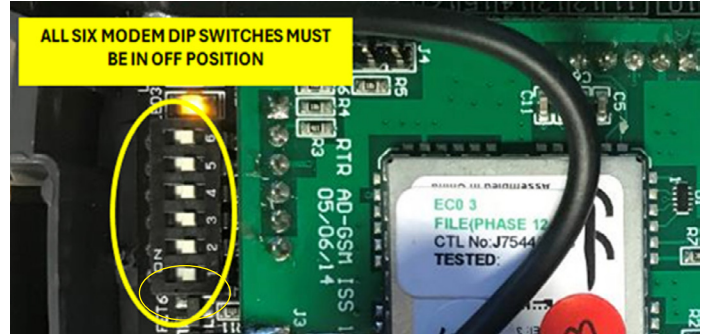
Connect power: Check that all 5 LEDs on upper PCB illuminate for 1 second. After a couple of seconds the end 2 LEDs will pulse. This is correct operation.



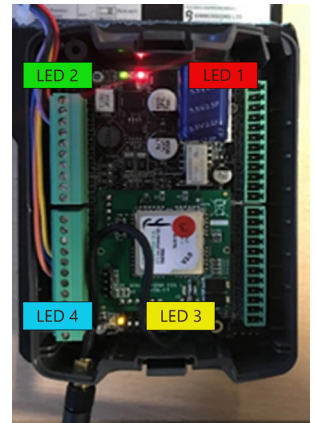
Simmons signs Limited reserves the right to alter or improve this guide without prior notice

MODEM LIGHTS & DIP SWITCHES

Check the Modem lights with the information on the right. All 6 Modem dip switches must be in the off position.



- LED 1 | Power supply indicator should be permanently lit, on solid (RED). If no light or blinking then power issue.
- LED 2 | Connectivity, confirming unit is connected to the network, should be permanently lit (GREEN) on solid. If not light or blinking, no GSM or GPRS connection, SIM or network connection issue.
- LED 3 | System flashes to confirm system is okay. If not activity from ORANGE/ YELLOW LED possible system issue.
- LED 4 | Modern comms, flashes confirming communication is okay. No activity from BLUE light possible comms issue.



JUMPER SETTINGS

The Pulsa is supplied with preset intensity. This is normal for the majority of applications. It is at this point that the jumper setting should be changed if required. This can be found on the lower PCB next to the magnetic switch connector.

CLUSTERS & MAGNET SWITCH

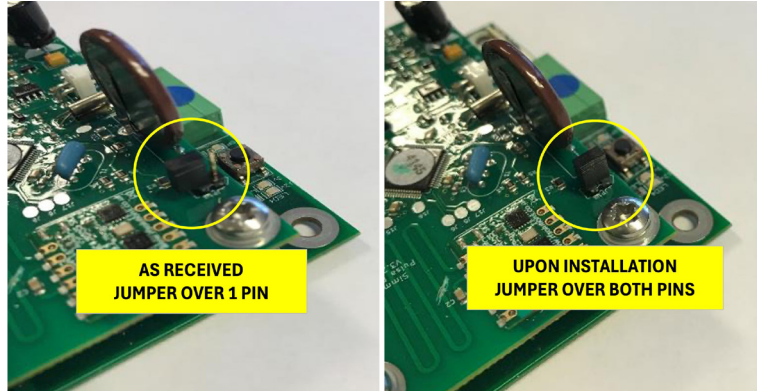
Confirm that the Clusters and Magnet switch operate correctly by swiping the Magnet at the bottom of the Pulsa. The Clusters should operate for approx 10 seconds.



Simmons signs Limited reserves the right to alter or improve this guide without prior notice

FITTING JUMPER

Fit JP1 by the battery, ensure both terminals are covered



If the above is successful the Pulsa is now ready to receive a calender from the Simpod

Simmons signs Limited reserves the right to alter or improve this guide without prior notice