

### DESCRIPTION

With the ever increasing cost of new works installations and maintenance, the GLOBAL baselight is a proven bollard lighting system which endures the rigours of road-side abuse and enables simple, effective maintenance, when required.

Regulation 2019/465 and 2020/1359 on Construction Products as brought into UK law and amended

### CONSTRUCTION

#### Body and Frame

Die cast LM6-M alloy.

#### Hinge System

7.5mm solid stainless steel (316) rod, running in cast-in stainless steel (304) tubular bushes.

#### Lock

M8 stainless steel (304) Tri-head penetrating cast-in stainless steel (A4) M8 threaded fixing on base casing.

#### Fuse Board

250mm x 160mm x 12.5mm thick non-hygroscopic plywood, bolted to the bottom of the base.

#### Lens and Seal

Domed 5mm thick, UV stabilised, injection moulded polycarbonate lens incorporating a UV stabilised, high performance seal. A compression control feature protects against over compression for a maintainable IP67 rating.

#### Cable Entry

Standard - 2 no. IP68 nylon variable cable glands fitted as standard (one blanked) accepting a cable diameter between 8mm and 17mm. Glands can be tightened from within the base after installation. (A purpose designed spanner is available to purchase from Simmons signs)

### OPTIONS

#### Cable Entry



**Turret** – Cast aluminium twin turret allows cable sealing using heat shrink tubing. Maximum cable diameter 20mm.

**Subseal** – Unique cast aluminium twin cable journal clamp designed for reinstating and sealing existing board cut-outs into new baselights. Sealed by injecting silicone into the cable support chamber. Silicone type to be waterproof to BS5889 Type B.

#### Fuse Board

**Double-fuse board.**

#### Safety

**Double-pole isolator** - isolates power to light unit as lens is removed.


#### Control

**Infrared photo-electric cell** - various manufacturers.

**Remote monitoring module** - various manufacturers.

*Simmons signs Limited reserves the right to alter or improve this guide without prior notice.*

## LIGHTING EQUIPMENT

LED 				
Voltage	240V AC		24V AC	
Light Source	10 x 1W*	3 x 1W	10 x 1W*	3 x 1W
Power (W)*	14W	6W	19W	7W
Warranty (yr)	2	2	2	2

LED and optical array mounted on a thermally engineered removable light unit.

Single IP67 electronic driver with  $\geq 0.85$  power factor correction. Note: the 10 x 1W has 2 drivers.

All components are fitted to a 2mm thick aluminium light unit, polyester powder coated white and have removable stainless steel fixings for easy replacement.

Please note: Improvements in LED technology may result in a change to this information.

\*Available configured as an uplighter.

## PACKAGING DETAILS

Product	Weight	Packing	Dimensions	Pack Quantity
Global	12.5kg	Carton	46.5 x 41 x 23 cm	1

## RELATED PRODUCTS



**SIMBOL**



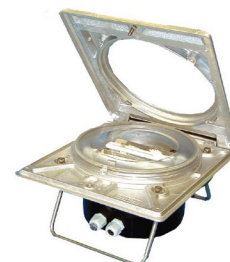
**CONTOUR**



**WEEBOL PLUS**



**INSIGHT**  
(GLOBAL UPLIGHTER)



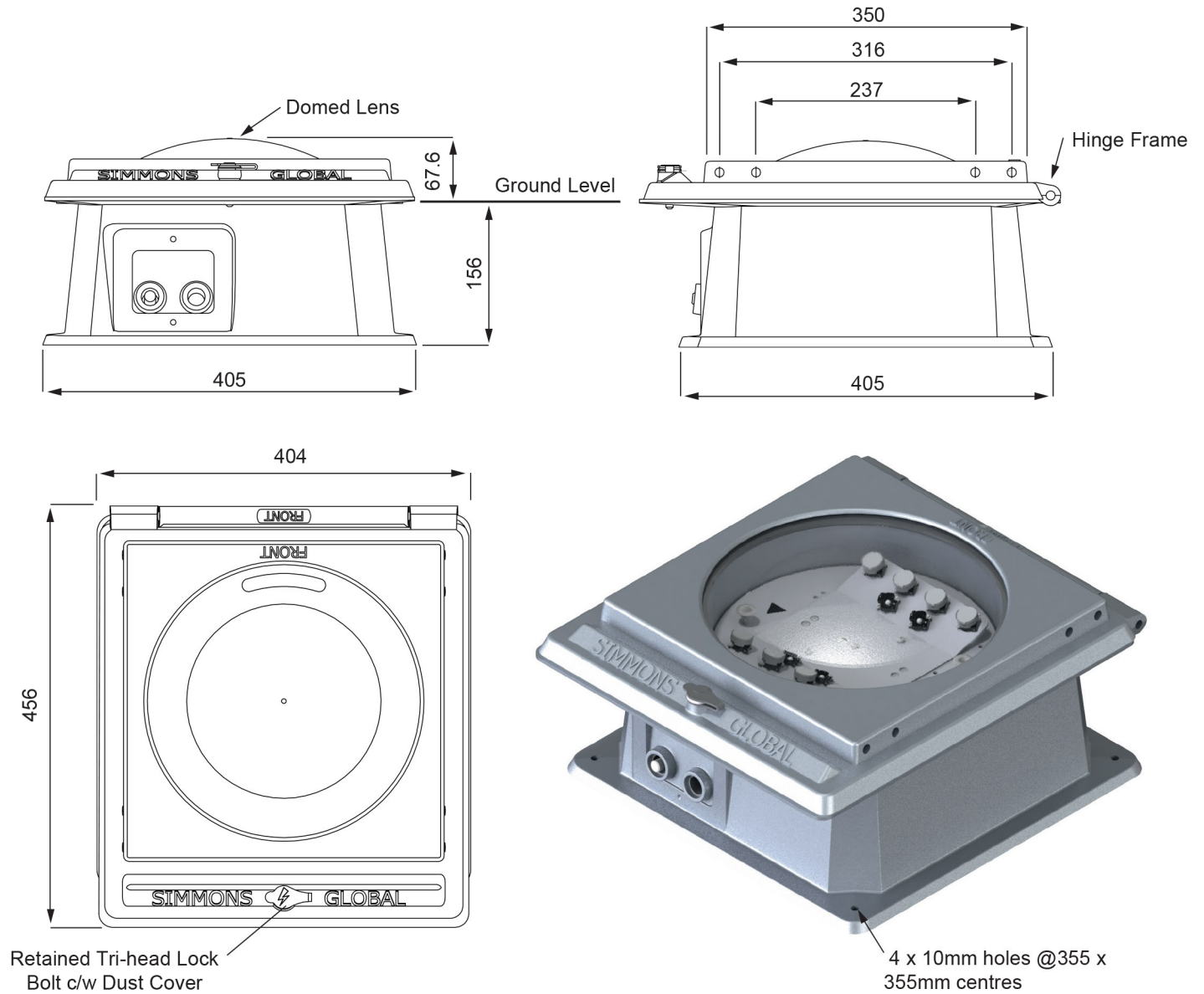
**GLOBAL PLUS**

## APPROVED BODY

**BSI Assurance UK Ltd - AB 0086**  
Kitemark Court, Davy Avenue, Knowlhill, Milton Keynes, MK5 8PP, United Kingdom

*Simmons signs Limited reserves the right to alter or improve this guide without prior notice.*

## DIMENSIONS



Simmons Limited reserves the right to alter or improve this guide without prior notice.