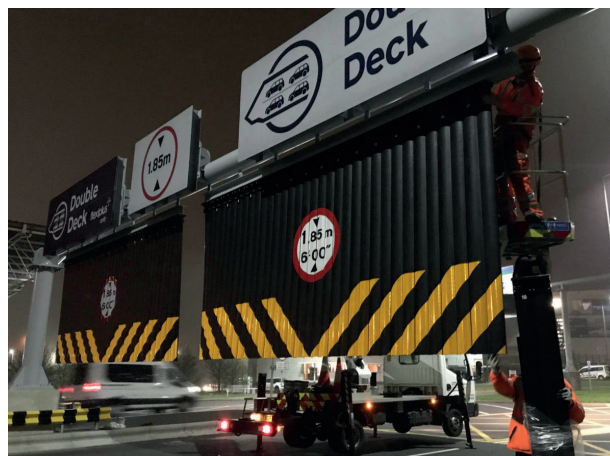


DESCRIPTION

Ideal as part of a protection system for bridge and tunnel assets, the Guardian Flex is a durable height restriction warning device, used as a final stage in advising over-height vehicles that may have ignored earlier approach warnings.

Our Guardian Flex presents drivers with a visual reference on the approach to a height restriction, followed by low impact physical contact should the vehicle continue unheeded. In order to protect upcoming bridges or tunnels, the barrier has a reboundable design that ensures the product returns to its original position following physical contact and recovers without damage.



FEATURES & BENEFITS

- Reflective graphics meeting requirements of BS8408:2005
- Reboundable design has proven field impact resistance, returning to upright original position and continues to function following impact
- Modular design, configurable to all site requirements
- Pre-fitted cable to ensure broken blades don't fall
- Tough UV stabilised polymer blade return unit remains operational over a wide range of temperatures, including sub-zero
- The blade return units are individually mounted blades that can be easily replaced if needed when damaged
- Blades have undergone specialised treatment to enable adhesion of reflective graphics
- Low impact causing little or no damage to vehicles
- Custom bespoke sizes
- Bespoke width and height to order

CONSTRUCTION

Foundation System

Customer pre-fitted structure (Universal I Beam) to Simmons signs template : Components are of 304 stainless steel with A2/A4 fasteners.

Blade Return Unit

The tough, UV stabilised polymer Blade Return Unit, which remains operational over a wide range of temperatures, mounts on the foundation system providing a flexible mounting for the Blades.

Blade construction

Extruded UV stabilised, high impact strength, black polymer Blades are mounted onto the Blade Return Unit. Each Blade resembles a figure 3 in plan, having radii of 148mm and is 300mm wide overall. Clips are used to hold Blades together, which un-clip on impact. Return edges provide additional Blade impact strength.

Graphics

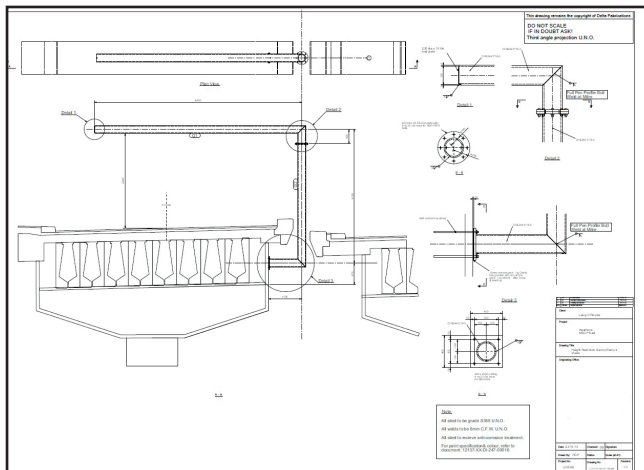
Reflective graphics meeting the requirements of BS 8408:2005 are applied to the Blades which have undergone a specialised treatment to ensure superb adhesion. Borders are 150mm.

Please note: The Roundel is split and applied directly to the blades.

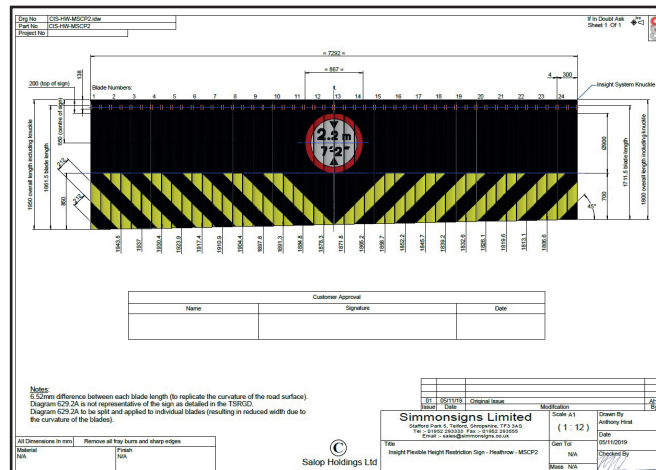
Simmons signs Limited reserves the right to alter or improve this guide without prior notice.

DESIGN AND MANUFACTURING WORKFLOW

DESIGN SIGN OFF

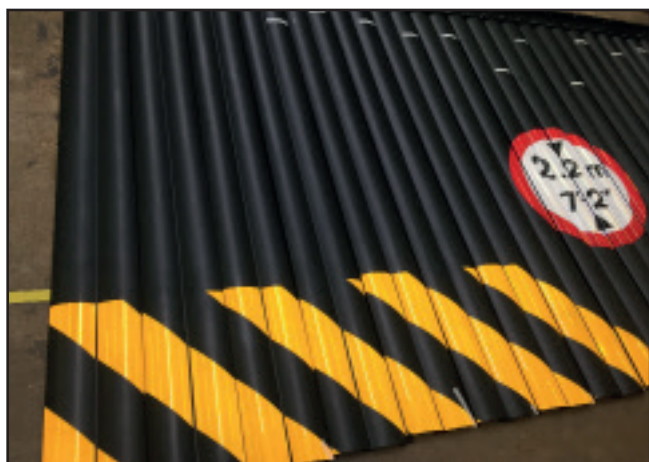


Customer provides site survey and Universal I Beam detail for mounting Guardian Flex in consultation with Simmons signs.



Simmons signs create a full suite of part and assembly drawings. The assembly drawing requires Customer sign off prior to manufacture.

MANUFACTURE AND DESPATCH



Simmons signs will manufacture the full sign in house to ensure all details are correct prior to shipping and installation.



The assembly will be dismantled then packed and despatched by pallet.

Simmons signs Limited reserves the right to alter or improve this guide without prior notice.

simmons signs.co.uk

+44 (0)7841 052 022
+44 (0)1952 293 333
sales@simmons signs.co.uk

Stafford Park 5
Telford Shropshire
TF3 3AS

Doc Ref: DG204
Issue Date: June 2022
Issue Number: 1