

Luminaires not suitable for covering with thermally insulated material



Luminaires not suitable for normally flammable surfaces



### SAFETY FIRST

Isolate the mains electrical supply before commencing installation.  
All electrical work must be carried out in accordance with the latest IET wiring regulations (BS7671) by suitably qualified engineers.

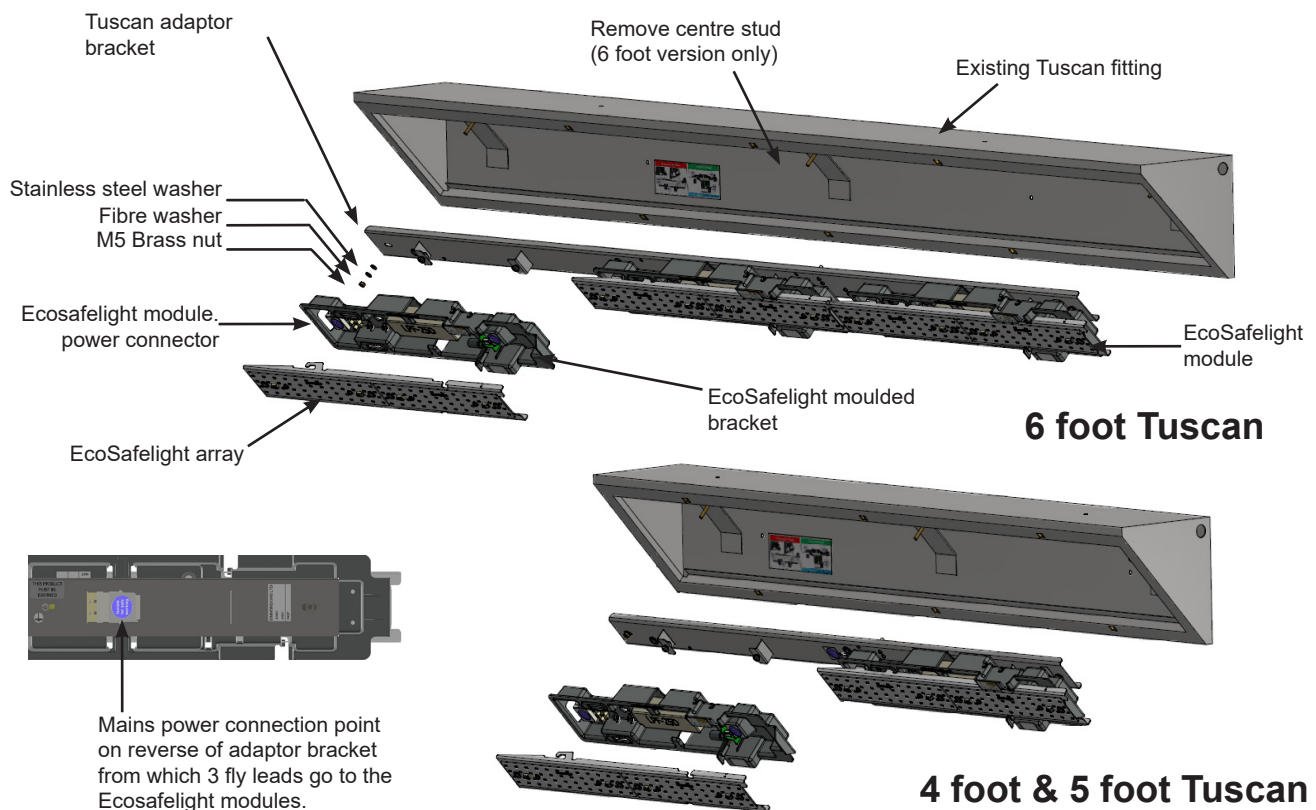
WARNING: DO NOT STARE AT LED's

### TOOLS REQUIRED

4-Hole security machine screwdriver  
Pozidriv recess No. 4 screwdriver  
3mm flat terminal screwdriver

Model	Pack Contents	Nominal Weight	Dimensions	Packaging
4 foot Tuscan	EcoSafelight array, Moulded bracket and replacement label (Max 2).	1.5 kg each	595 x 112 x 64mm	1 per carton
	Tuscan adaptor bracket and Mains connector cable	2.0kg	1400mm x 80 dia	1 per carton
5 foot Tuscan	EcoSafelight array, Moulded bracket and replacement label (Max 2).	1.5 kg each	595 x 112 x 64mm	1 per carton
	Tuscan adaptor bracket and Mains connector cable	2.5 kg	1500 x 80 dia	1 per carton
6 foot Tuscan	EcoSafelight array Moulded bracket and replacement label (Max 3).	1.5 kg each	595 x 112 x 64mm	1 per carton
	Tuscan adaptor and Mains connector cable	3.2kg	1800mm x 80 dia	1 per carton

### EXPLODED VIEW



Simmons Signs Limited reserves the right to alter or improve this guide without prior notice.

### Method

#### 1. Isolate power for safe working.

Use the appropriate security tool to undo the front bezel M6 screws, taking care to support the front bezel whilst removing it.

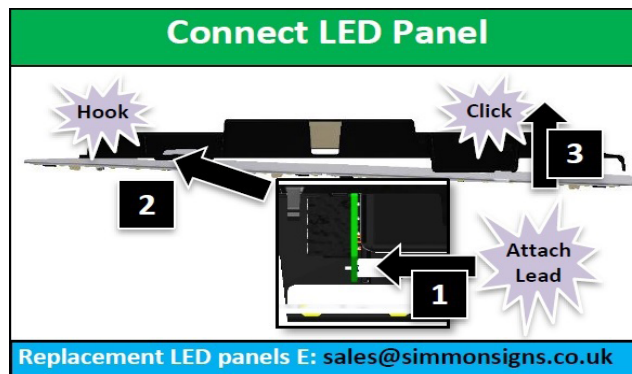
2. With the front panel set aside you now have access to the existing light unit. Firstly remove the power connector plug then remove the two M5 threaded plastic fixings by hand. You will now be able to remove the light unit and dispose of it according to the WEEE directive.

3. Locate the incoming supply cable and the terminal block where it connects to the existing gear tray fly-lead. Remove the existing gear tray fly-lead from the terminal block and replace with the new one supplied with the Tuscan adaptor bracket. Next fit the adaptor bracket over the two M5 studs and fix with two off M5 insulated washers and brass nuts. (See exploded view on page 1).  
Note: On the 6 foot variant you must remove the centre stud.

4. Take an Ecosafelight module and disconnect the LED array as described below. Take the moulded bracket and fit the keyholes over the two screws in the Tuscan adaptor bracket and slide it to the left such that the screws are centred on the narrowest part of the keyholes and tighten the Pozidriv screws with the screwdriver.

5. Fit the mains connector plug to moulded bracket socket and then the LED Panel plug to the dimming board connector (1) and then

the LED array to the bracket by re-inserting the hooks (2) and pushing the array to engage the clips (3). Repeat steps 4 and 5 if fitting additional EcoSafelight modules.



6. The assembly instruction label should be fixed to the inside face of the Tuscan body below the unit for future reference.

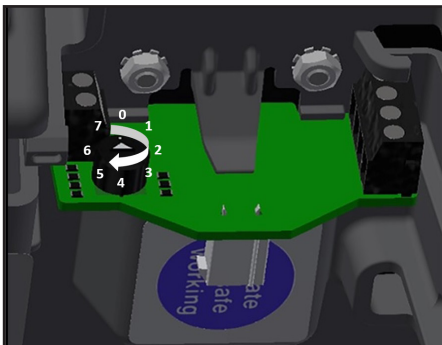
7. Finally lift and reposition the front bezel and fix into place with the retained M6 screws.

### Lighting level adjustment

The switch position is factory set and should not be adjusted on site, this information is provided as a reference for potential future upgrades. Modifying the adjustment will affect the lighting levels prescribed in any lighting design provided.

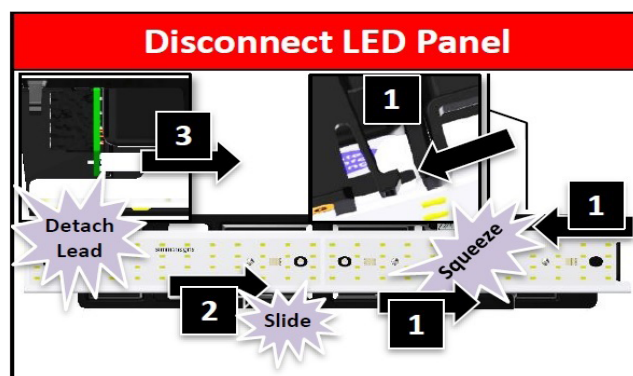
The lighting level of this unit can be set using the rotary switch in the diagram below. Increments indicate the output level.

A 3mm flat terminal screwdriver may assist in turning this.

	Switch Position	Power
	0	100%
	1	16%
	2	30%
	3	40%
	4	47%
	5	54%
	6	65%
	7	78%

### Disconnecting LED array

To disconnect the LED array from the moulded bracket, simply apply a gentle squeezing force with thumb and index finger on each of the two clip heads shown (1) and pull forward. When released slide the LED panel to the right to disengage the two hooks shown (2) and remove LED Panel plug (3).



Simmons signs Limited reserves the right to alter or improve this guide without prior notice.