

SAFETY FIRST

Isolate the mains electrical supply before commencing installation. All electrical work must be carried out in accordance with the latest IET wiring regulations (BS7671) by suitably qualified engineers.

TOOLS REQUIRED

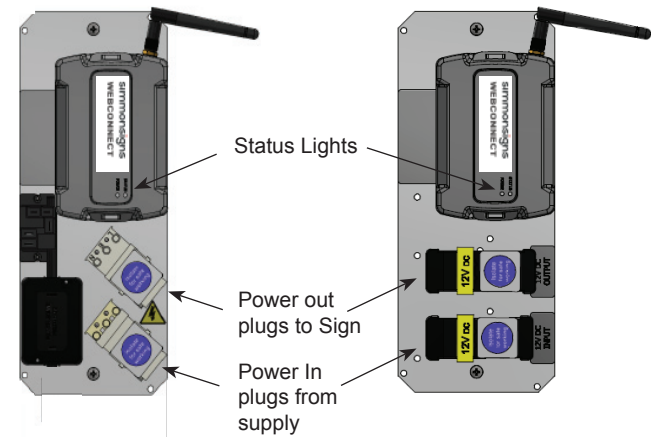
Wire trimmers.
Phillips screwdriver (small).
3mm Spade end screwdriver.

Required tools for weatherproof box installation
13 mm ring/open ended spanners.
15mm Drill.
19mm open ended spanner.

INSTALLATION

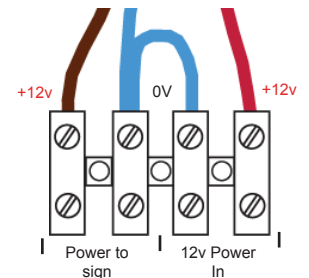
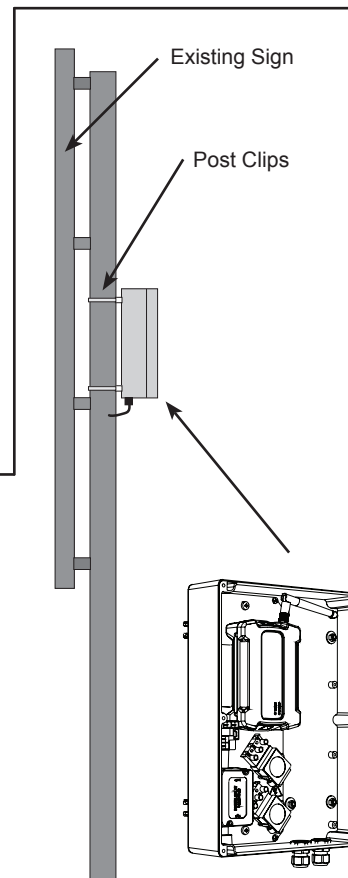
The Webconnect is a replacement web based calendar switching device for existing school warning light installations. Available for both 230v ac and 12v dc systems, there is a version to suit most installations. Please ensure you have the correct version for your application.

1. Isolate the mains supply and determine where the current timer device is fitted. This is likely to be in the column base or in a weather-proof box mounted on the back of the existing sign.
2. Study the existing timer and locate the power input leads connecting it to the supply, and the power output leads connecting to the sign.
3. Remove the existing timer and mount the GPRS Webconnect in a suitable location. It is important that the GPRS Webconnect is protected from the weather. An optional weather proof box is available should the existing location be unsuitable.
4. All versions of Webconnect are wired in a similar way to the existing timer in that they require two connections; power in from the supply and power out to the sign.
5. Connect the Webconnect to the power supply. If the supply is 230v then the Webconnect should be protected by a fused Isolator.
6. Connect the Webconnect output leads to the sign.
7. Re-connect the power and look for a red and a green status light on the GPRS Webconnect housing. The steady red light indicates that the unit is receiving power and the green light indicates the GPRS connection status. When the green light runs steady a GPRS signal has been acquired.
8. Gather the SIM card number, voice number and web site login details then visit gprs.simmons signs.co.uk. Here you can register the device to begin using the features.



230V WEBCONNECT

12V WEBCONNECT



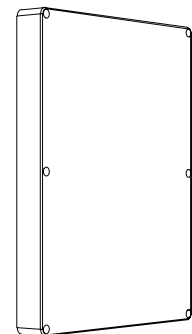
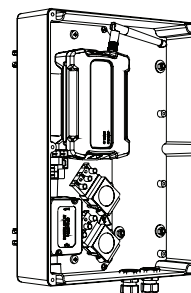
The Webconnect Lite is an unframed version ideal for use where space is tight. It is only available for a 12v system. Self adhesive velcro is supplied to fix to a flat surface.

12V WEBCONNECT LITE

OPTIONAL WEATHER PROOF BOX

The weather proof box is designed to accommodate the open frame Webconnect and mount behind the existing sign.

1. Select the appropriate channel clips and secure the box to the supporting post.
2. Drill the post to accommodate the connecting cables and surface protect the bare metal edges.
3. Route the power-in and power-out cables through the glands provided. Flexible conduit to cover the cables is recommended.
4. Connect the cables to the Webconnect as detailed above.



Simmons signs Limited reserves the right to alter or improve this guide without prior notice.