

DESCRIPTION

The Weebol Plus is a full sized, 300mm trans-illuminated sign on a fully retro-reflective bollard, offering outstanding visibility by day and by night. Consuming only 7 watts*, the sign is illuminated to 175cd/m² with superb uniformity conforming with L2 BS12899 for trans-illuminated signs.



CONSTRUCTION

Body

One piece, rotationally moulded, medium density polyethylene, self colour white. 4mm nominal wall thickness.

Graphics

Single aspect 3M Diamond grade reflective sign face on front only, set into moulded rebates, with rebated amber diamond grade side panels. Optional rear aspect.

Base Conversion

Cast LM6M marine grade alloy, acid cleaned, chromate primed and polyester powder coated black. Cast-in stainless steel bollard fixing studs and fittings.

LIGHTING EQUIPMENT

Light engine featuring long life LED'S.

OPTIONS

- Baselight installation adaptor for most industry bases.
- Retention socket.
- Double sided.
- Black body.
- Photocell.
- Anti graffiti coating.
- 240volt ac.
- 24volt ac.

D610



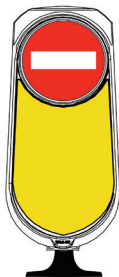
D610R



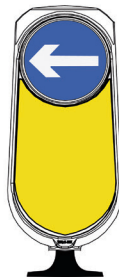
D611



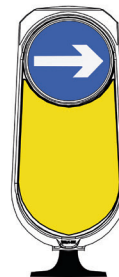
D616



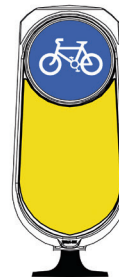
D606



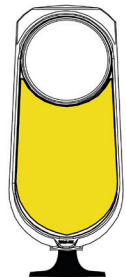
D606R



D955



PLAIN ASPECT



Simmons signs Limited reserves the right to alter or improve this guide without prior notice.

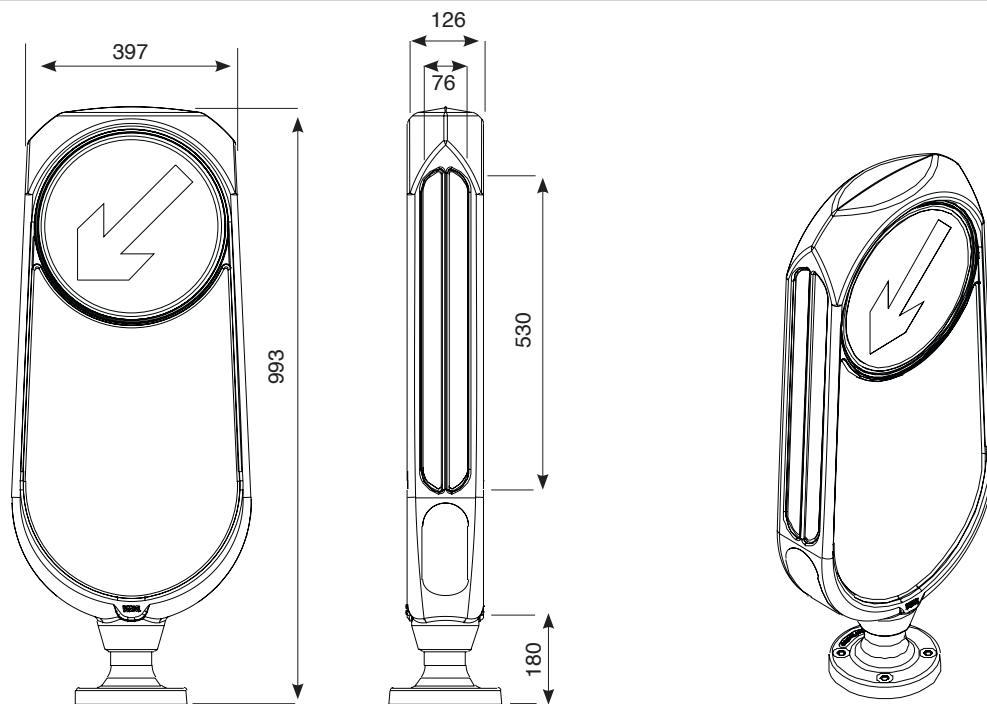
simmons signs.co.uk

+44 (0)7841 052 022
+44 (0)1952 293 333
sales@simmons signs.co.uk

Stafford Park 5
Telford Shropshire
TF3 3AS

Doc Ref: DG057
Issue Date: April 2016
Issue Number: 1

DIMENSIONS



RELATED PRODUCTS



Transition Casting



Retention Socket



Global baselight
without light unit

PACKAGING DETAILS

Product	Weight	Packing	Dimensions	Pack Quality
Weebol Plus	10kg	Carton	109 x 21 x 40cm	1

Simmons Limited reserves the right to alter or improve this guide without prior notice.

simmons.co.uk

+44 (0)7841 052 022
+44 (0)1952 293 333
sales@simmons.co.uk

Stafford Park 5
Telford Shropshire
TF3 3AS

Doc Ref: DG057
Issue Date: April 2016
Issue Number: 1