

Installation.

Safety first.

- 1) Beware of buried services.

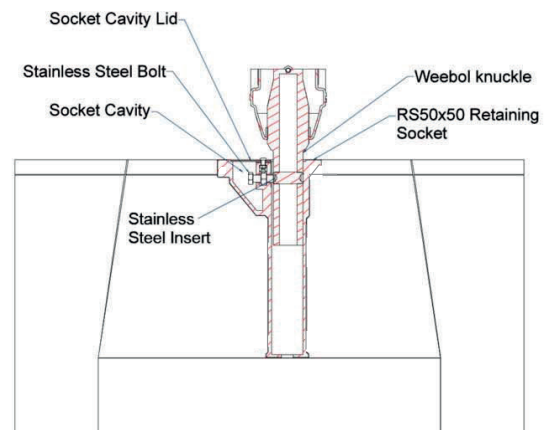
Foundation Preparation.

- 1) Excavate a hole 475mm x 390mm x 410mm minimum depth.
- 2) Fill the hole with compacted hardcore to 335mm away from the ground level.
- 4) Place the RS50x50 Retaining Socket in the centre of the hole.
- 5) Remove and retain the Socket Rebate Cover and Socket Cavity Lid and ensure the RS50x50 Retaining Socket is in a vertical position using a short section of 50x50 RHS & a spirit level.
- 6) Fill the foundation with at least grade ST4/C25 concrete mix, removing air pockets with a vibrating poker, up to within 25mm of the top of the socket to allow for final surfacing.
- 7) Remove the 50x50 RHS & replace the Socket Rebate Cover and Socket Cavity Lid.

Installing the Weebol.

- 1) Once the foundation is set remove the Socket Cavity Cover and Socket Cavity Lid and place the Weebol into the socket, securing the stainless steel bolt against the Weebol knuckle ensuring the bolt engages with the stainless steel insert.
- 2) Retain the Socket Rebate Cover in the socket cavity & replace the Socket Cavity Lid.
- 3) Check that the Weebol is in a vertical position.

Note: If the surrounding ground is loose or uncompacted then a wider/deeper concrete foundation should be used.



A-A (1 : 4)

Simmons signs Limited reserves the right to alter or improve this guide without prior notice.