

114 and 89mm MIDUBEL INSTALLATION GUIDE

The MIDUBEL is high specification mid-post fitting Belisha beacon assembly. It is available to fit 76, 89 and 114mm standard posts. (See separate guide for the 76mm installation). All models feature a vandal resistant globe fixing system and long life LED lighting units operating on a 24volt ac power supply taken from the supplied transformer module. With careful installation the units will provide many years of trouble free service.

SAFETY FIRST

Isolate the electrical supply before commencing any installation or maintenance work. Wiring should be carried out in accordance with the latest IEE regulations by suitably qualified engineers.

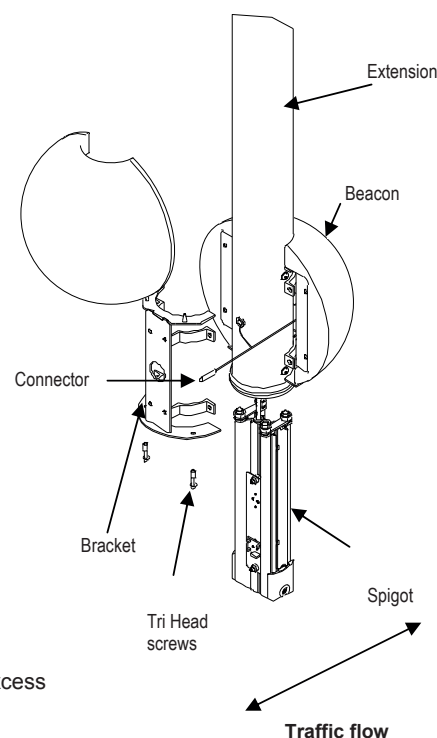
This equipment is designed for 24volt ac operation.

Tools required:

Tri-head Key.	2 x 13mm AF Spanner
Philips screwdriver	20 mm drill

Installation

1. Isolate the mains supply and determine the height to the bottom of the beacon. Measure 125mm up from this line and drill a 20mm hole facing the traffic flow. Ensure the hole is free from burrs and sharp edges.
2. Take the supplied power lead and identify the single power connector on one end. Pass this connector through the drilled hole and down the post into the gear compartment.
3. Take the two mounting brackets and fit them to the post ensuring that the large holes in the brackets face the oncoming traffic. Also ensure that the cable emerging from the post does not go through the large holes in the bracket but is pulled to the side. The bottom of the bracket defines the base of the MIDUBEL.
4. Connect each half of the beacon to the each end of the power cable then hook them onto the bracket. Secure each half by tightening the two Tri-head screws which will pull the beacon down onto their studs.
5. Mount the transformer unit in the gear housing using the fixing screws provided.
6. Connect the mains input cable from the transformer to the incoming 240vac mains supply at the fused cut-out.
7. Plug the cable from the beacon into the output lead of the transformer. Coil any excess cable in the base compartment and tie up neatly.
8. On reconnection the MIDUBEL should operate after a short delay.
9. More than one MIDUBEL can be synchronised by powering all at the same time or by powering one beacon to match the other. The MIDUBELS will then stay synchronised*.



*dependant upon mains quality

Simmons signs Limited reserves the right to alter or improve this guide without prior notice.