

Luminaires not suitable for covering with thermally insulated material



Luminaires not suitable for normally flammable surfaces



SAFETY FIRST

Isolate the mains electrical supply before commencing installation.

All electrical work must be carried out in accordance with the latest IET wiring regulations (BS7671) by suitably qualified engineers.

WARNING: DO NOT STARE AT LEDs

| Pack Contents | Nominal Weight | Dimensions | Packaging |
|---|----------------|-------------------|-----------|
| LED Array Moulded bracket Array Replacement Label Bergo conversion brackets Mains connector cable with 15A connector block and earth lead | 1.95Kg | 710 x 200 x 120mm | 1 per box |

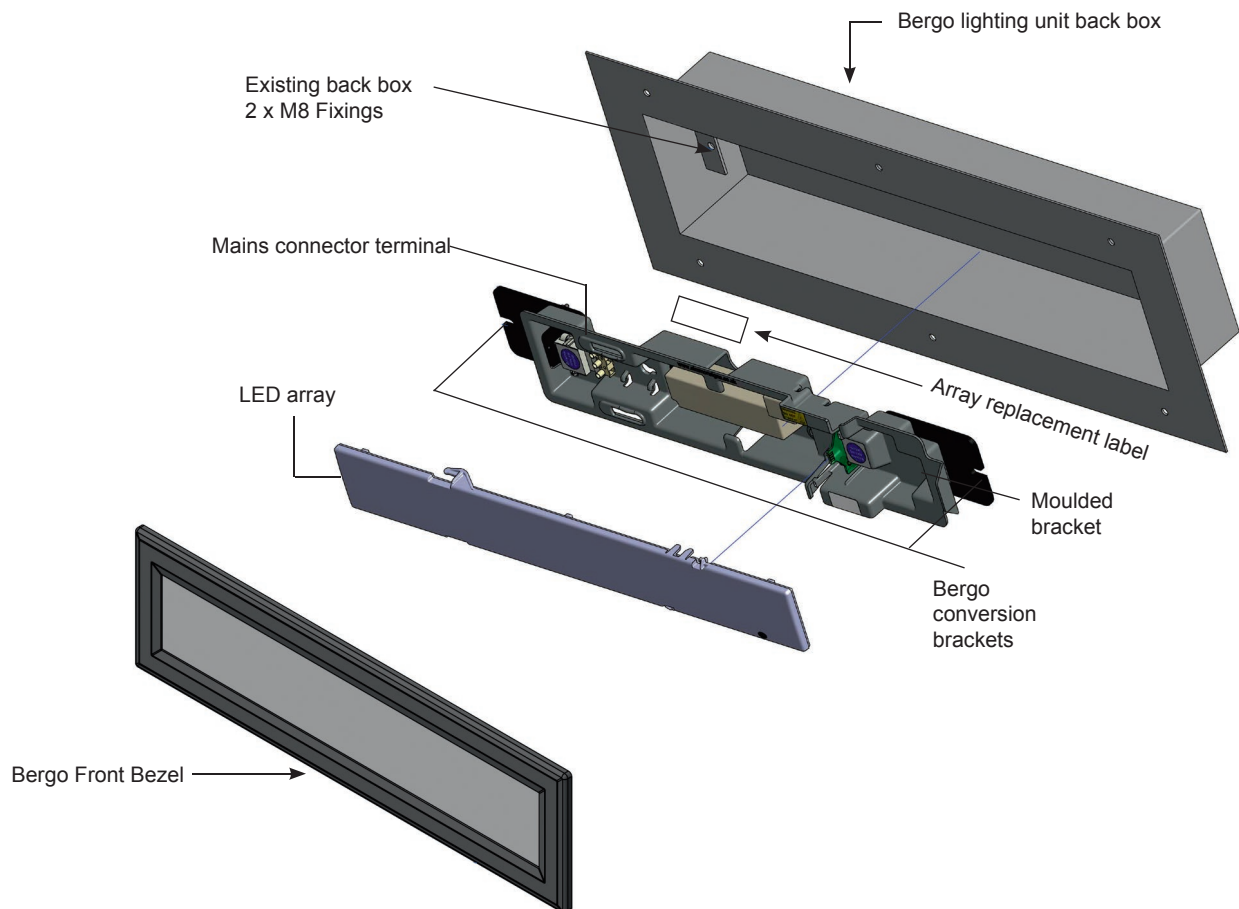
TOOLS REQUIRED

4-Hole security machine screwdriver

Pozidriv recess No. 4 screwdriver

3mm flat terminal screwdriver

6mm flat terminal screwdriver



Simmons signs Limited reserves the right to alter or improve this guide without prior notice.

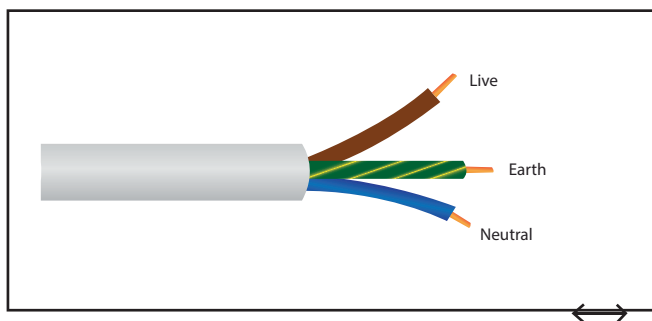
Method

Isolate power for safe working and removing existing light unit.

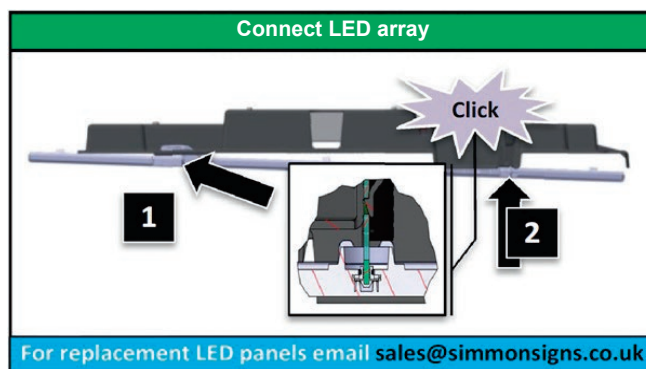
1. Use the appropriate security tool to undo the six off front bezel M8 screws, taking care to support the front bezel whilst removing it. Front bezel fixing methods may vary.
2. With the front panel set aside you now have access to the existing light unit. Firstly remove the power connector plug then remove and retain the two fixings by hand that hold in the existing light unit. You will now be able to remove the light unit and dispose of it according to the WEEE directive.
3. Remove the existing power connector cable and replace with the power connector cable supplied. Wire this into the incoming mains terminal block ensuring Live Neutral and Earth are correctly connected.

Plug the power connector into the power connector terminal of the moulded bracket and offer this up to Bergo back box. Fix in place using the original lighting unit fasteners.

Wiring diagram



4. Connect the LED panel to the moulded bracket by inserting the hooks (1) and pushing the panel to engage the clips (2) ensuring that the PCB connector is correctly aligned. You can see this through the LED array mid-way between the clips.



5. The assembly instruction label should be fixed to the inside face of the Bergo body below the unit for future reference.
6. Finally lift and reposition the front bezel and fix into place with the retained six off M8 screws.

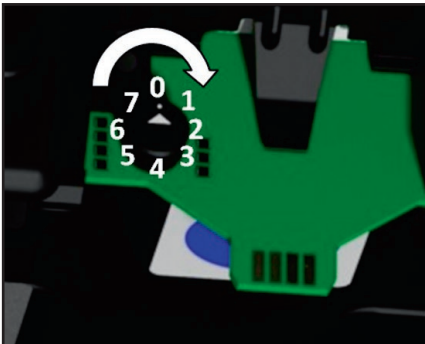
Lighting level adjustment

The switch position is factory set and should not be adjusted on site, this information is provided as a reference for potential future upgrades. Modifying the adjustment will affect the lighting levels prescribed in any lighting design provided.

The lighting level of this unit can be set using the rotary switch in the diagram below. Increments indicate the output level.

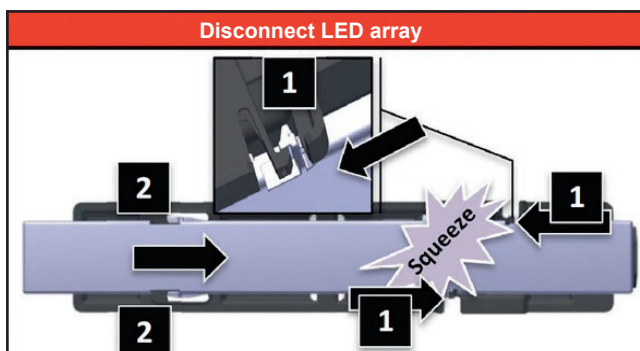
A 3mm flat terminal screwdriver may assist in turning this.

| Switch Position | Power |
|-----------------|-------|
| 0 | 100% |
| 1 | 10% |
| 2 | 27% |
| 3 | 39% |
| 4 | 47% |
| 5 | 56% |
| 6 | 68% |
| 7 | 82% |



Disconnecting LED array

To disconnect the LED array from the moulded bracket, simply apply a gentle squeezing force with thumb and index finger on each of the two clip heads shown (1) and pull forward. When released slide the LED panel to the right to disengage the two hooks shown (2).



Simmons signs Limited reserves the right to alter or improve this guide without prior notice.